

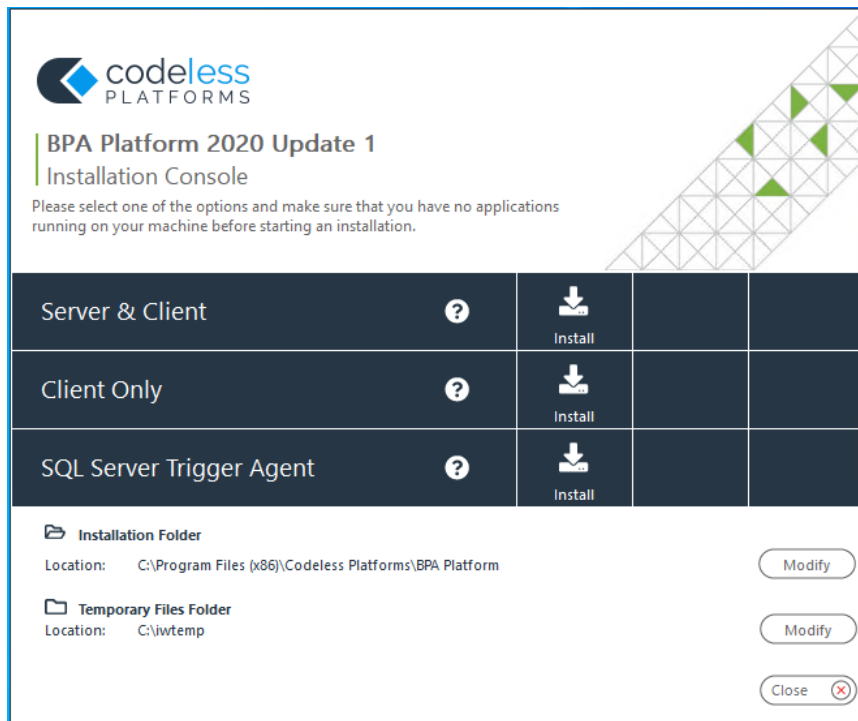
Credit Hound – Codeless BPA Platform – Installation

This guide details how to install BPA for Credit Hound.

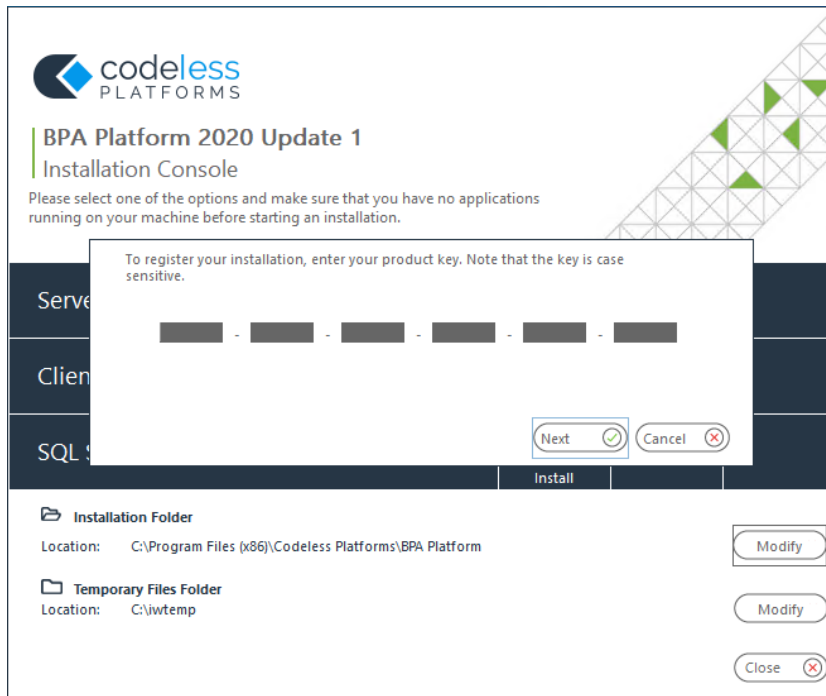
See the BPA-2020-Quick-Start-Upgrade-Guide.pdf for further detailed information on the installation process.

Run Setup

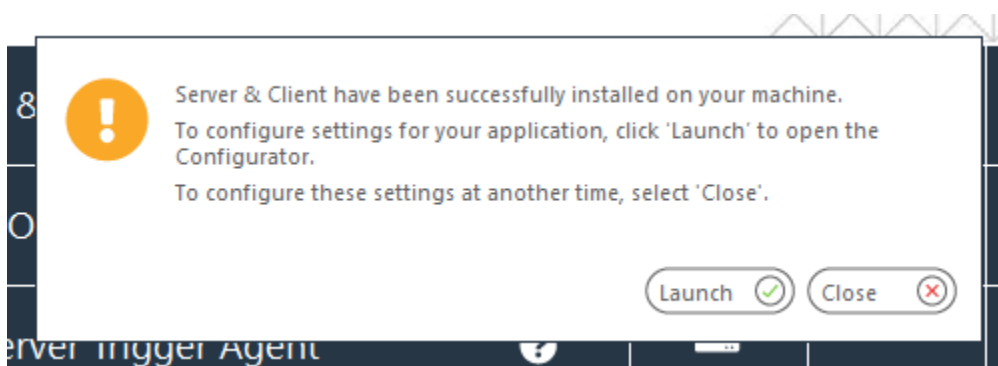
- Run the self-setup.exe file
- Install the Server & Client



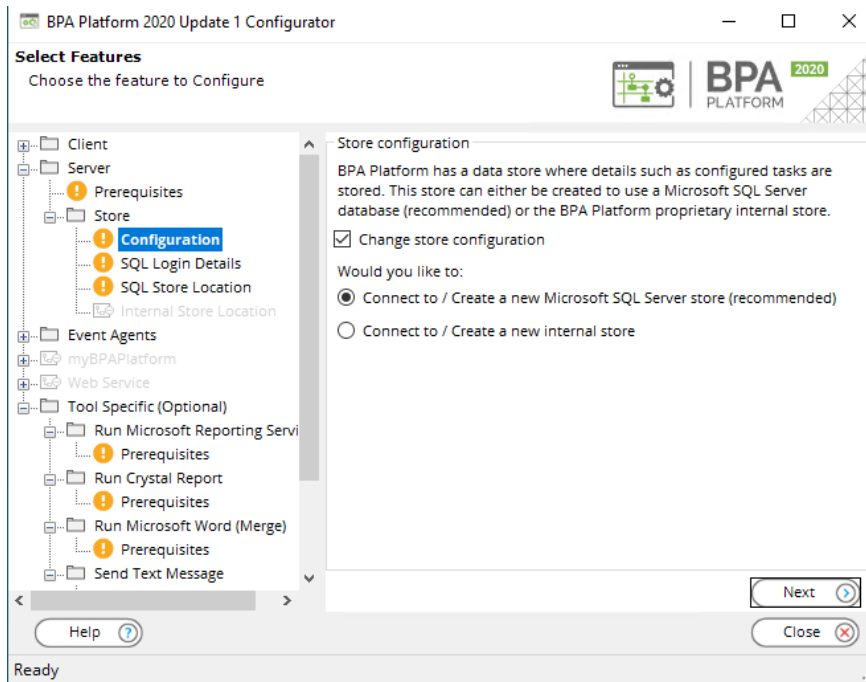
- Enter your product key



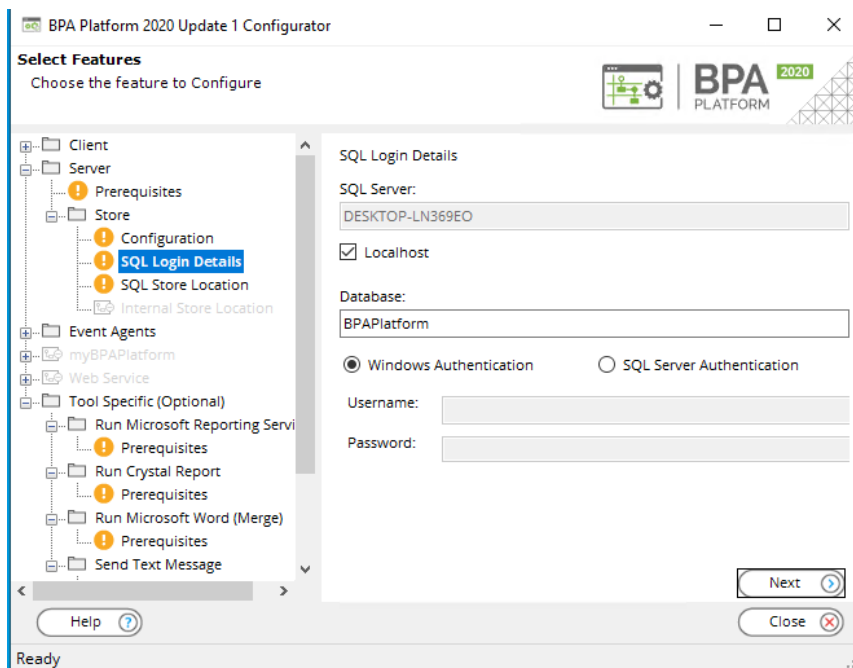
- Accept the Licence Agreement
- Begin the installation
- At the end of the install, launch the Configurator



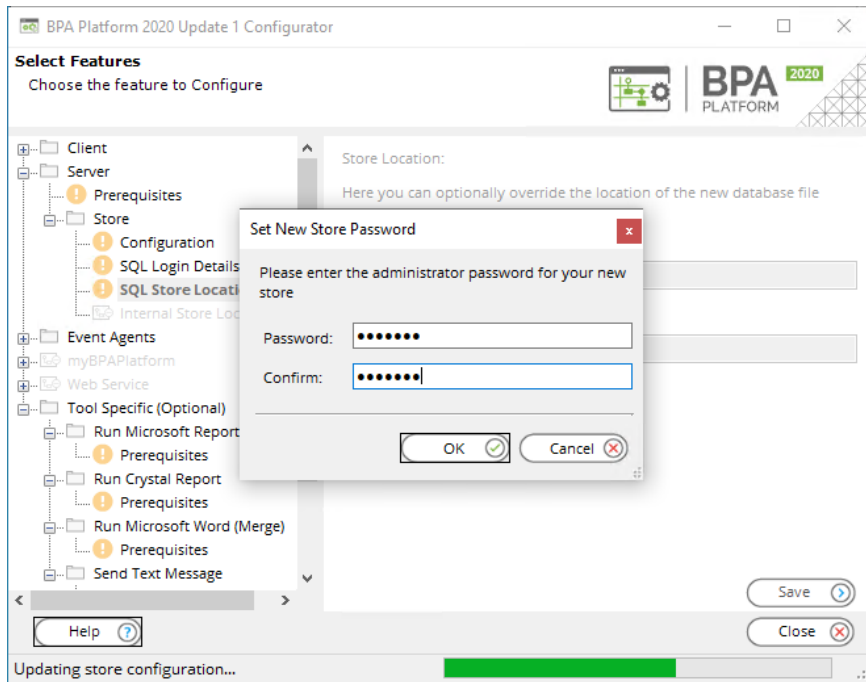
- Connect to SQL Server and click **Next**



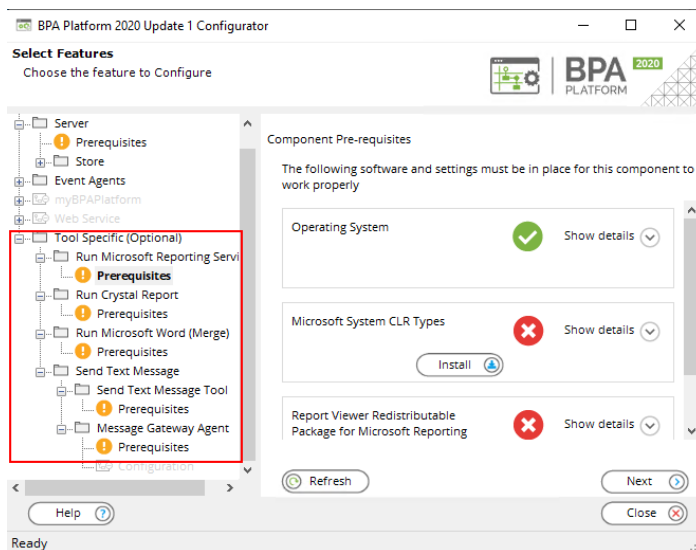
- Specify your SQL Server (e.g. click Localhost) and choose your authentication type and click next
 - If SQL Server Authentication, specify your Username and Password



- From the pop-up that appears, set the **administrator** password. **Important:** This password is for the first internal BPA administrator user. Make a note as this will be used to login to the Client and setup other users later:



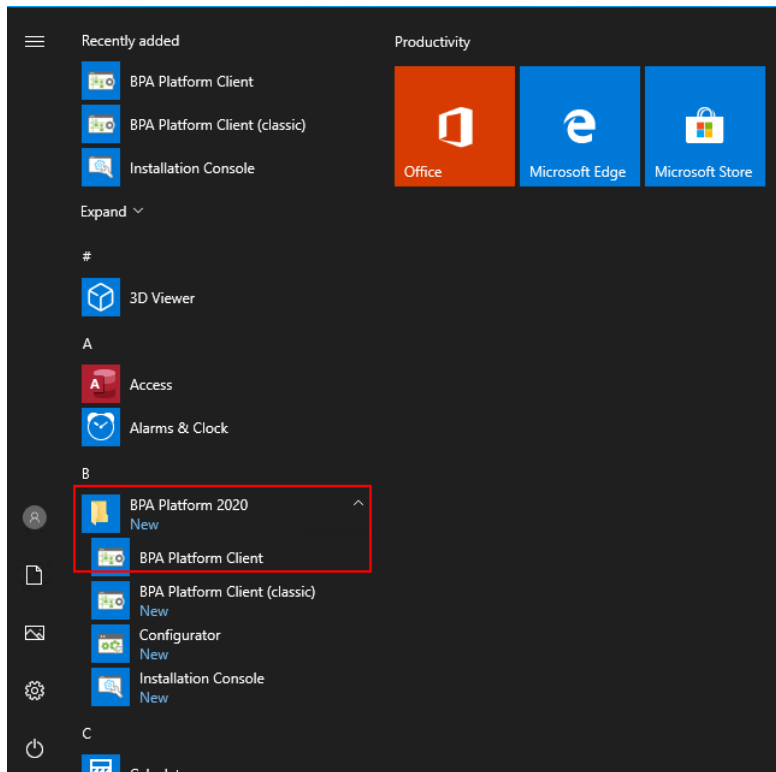
- It is not mandatory to install the **Tool Specific** Features as the Credit Hound Alerts do not use them



- You can click 'Close' to finish the installation and close the installation console

Configure BPA

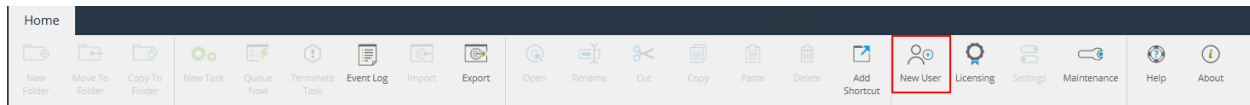
- Launch the BPA Platform Client from the Start Menu



- When prompted, login using Internal authentication, using the credentials for the internal user (administrator) that was created during installation

A screenshot of the 'Login' dialog box. It has a title bar with a user icon and a close button. The 'Target Domain' section has a 'Server' dropdown set to 'localhost'. The 'Authentication' section has a 'Type' dropdown set to 'Internal'. The 'Login Credentials' section has a 'Specify Credentials' checkbox, a 'Username' field with 'administrator', a 'Password' field with two asterisks, and a 'Domain' field. There is a 'Set As Default' checkbox. At the bottom are 'OK' and 'Cancel' buttons with checkmark and X icons respectively.

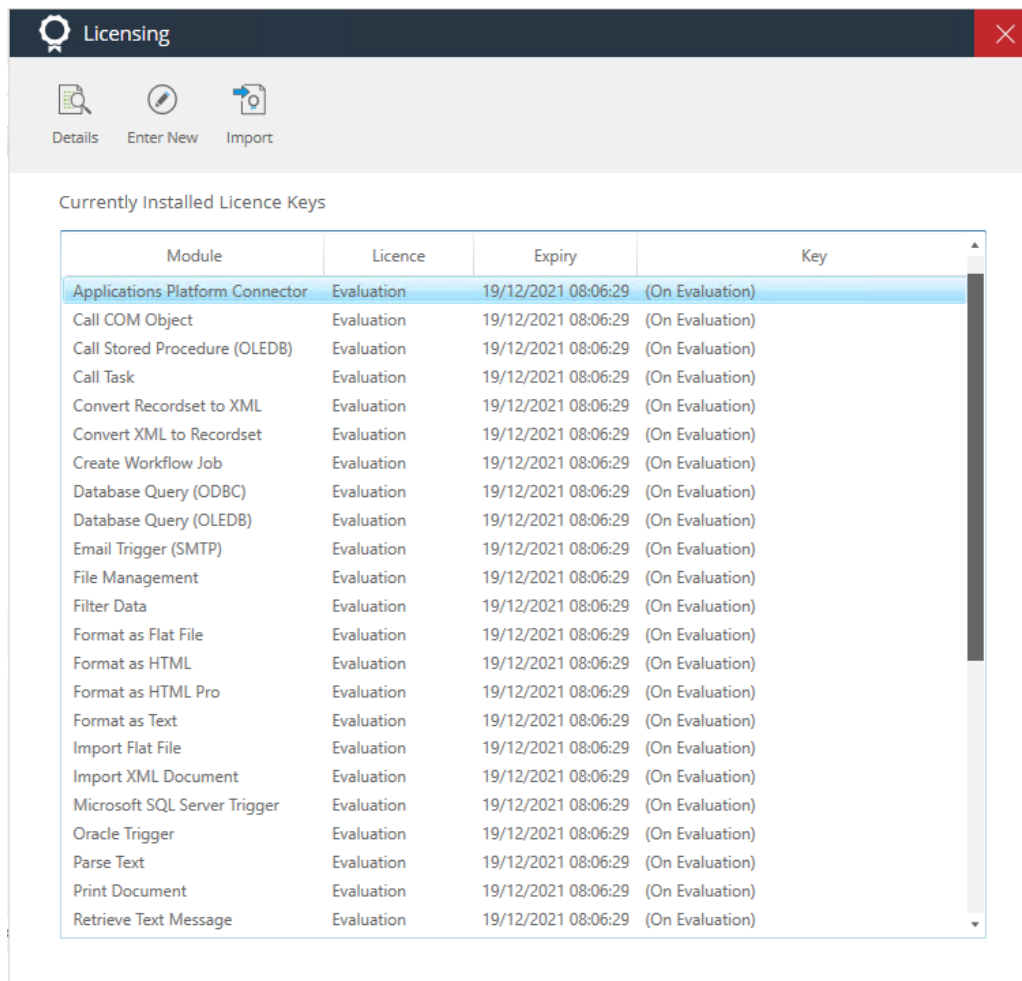
- When BPA launches, select New User from the toolbar



- You can create a new user using Windows Authentication
- On the Server Roles tab, select System Administrator
 - This will give access to all Allowed Tools
- Click 'OK'
- The user will be created

Name	Type	Server Roles	Logged In	Last Login
Administrator	BPA Platform	System Administrator	<input checked="" type="checkbox"/>	19/11/2021 08:20:24
DESKTOP-LN369EO\Draycir	Windows	System Administrator	<input type="checkbox"/>	

- Click on **Licensing** and import your Licensing Information .qsl file



- You can now close BPA
- When you re-open the BPA Platform Client, you can now login with Windows Authentication

The screenshot shows a 'Login' dialog box with a dark blue header bar containing a user icon and a close button. The dialog is divided into several sections: 'Target Domain' with a 'Server' dropdown menu set to 'DESKTOP-LN369EO'; 'Authentication' with a 'Type' dropdown menu set to 'Windows'; 'Login Credentials' which includes a 'Specify Credentials' checkbox and three input fields for 'Username', 'Password' (masked with asterisks), and 'Domain'; and a 'Set As Default' checkbox. At the bottom are 'OK' and 'Cancel' buttons with green and red checkmarks respectively.

Login

Target Domain

Server: DESKTOP-LN369EO

Authentication

Type: Windows

Login Credentials

☐ Specify Credentials

Username:

** Password:

Domain:

Set As Default ☐

OK Cancel